

DESCRIPTION

The Preso segmented wedge Model COIN[®] segmented or segmental wedge design is a differential pressure type flow element.

CONFIGURATION

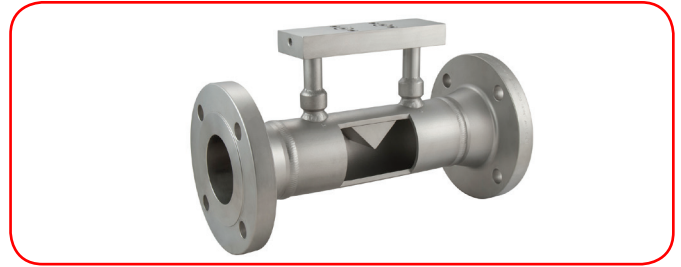
The inlet section is the same diameter as the incoming pipe section and is followed by a precise segmented single piece construction angled section equal on both sides for bidirectional flow measurement. The H/ID ratio is determined by the manufacturer according to recognized standards and formulas. The discharge coefficient (Cd) is linear and stable in the operating flow range.

MATERIALS

The construction material, instrument connections, instrument valves or instrument flange connections, and end connections are selected to meet intended service conditions. Identification tag is provided as required.

ACCURACY & REPEATABILITY

The accuracy of the COIN meter is within $\pm 3.0\%$ (uncalibrated) and $\pm 0.5\%$ (calibrated) with a repeatability of $\pm 0.2\%$ and turndown of 10:1 in the corresponding and appropriate range of Reynolds' Numbers. For custody transfer applications, the COIN meter is flow tested by an independent NIST certified laboratory under the design operating conditions and piping configurations.



QUALITY

All COIN meters are manufactured under an ISO 9001:2008 certified quality program. Certification documentation is available for inspection. The manufacturer will provide a Flow Calculation Data Sheet with standard data and formulas for approval by the design engineer.

APPLICABLE FLUIDS

Liquids, gases and steam.

Control. Manage. Optimize.

PRESO and COIN are registered trademarks of Badger Meter, Inc. Other trademarks appearing in this document are the property of their respective entities. Due to continuous research, product improvements and enhancements, Badger Meter reserves the right to change product or system specifications without notice, except to the extent an outstanding contractual obligation exists. © 2016 Badger Meter, Inc. All rights reserved.

www.badgermeter.com

The Americas | Badger Meter | 4545 West Brown Deer Rd | PO Box 245036 | Milwaukee, WI 53224-9536 | 800-876-3837 | 414-355-0400
México | Badger Meter de las Americas, S.A. de C.V. | Pedro Luis Ogazón N°32 | Esq. Angelina N°24 | Colonia Guadalupe Inn | CP 01050 | México, DF | México | +52-55-5662-0882
Europe, Middle East and Africa | Badger Meter Europa GmbH | Nurtinger Str 76 | 72639 Neuffen | Germany | +49-7025-9208-0
Europe, Middle East Branch Office | Badger Meter Europe | PO Box 341442 | Dubai Silicon Oasis, Head Quarter Building, Wing C, Office #C209 | Dubai / UAE | +971-4-371 2503
Czech Republic | Badger Meter Czech Republic s.r.o. | Mařikova 2082/26 | 621 00 Brno, Czech Republic | +420-5-41420411
Slovakia | Badger Meter Slovakia s.r.o. | Racianska 109/B | 831 02 Bratislava, Slovakia | +421-2-44 63 83 01
Asia Pacific | Badger Meter | 80 Marine Parade Rd | 21-06 Parkway Parade | Singapore 449269 | +65-63464836
China | Badger Meter | 7-1202 | 99 Hangzhong Road | Minhang District | Shanghai | China 201101 | +86-21-5763 5412